

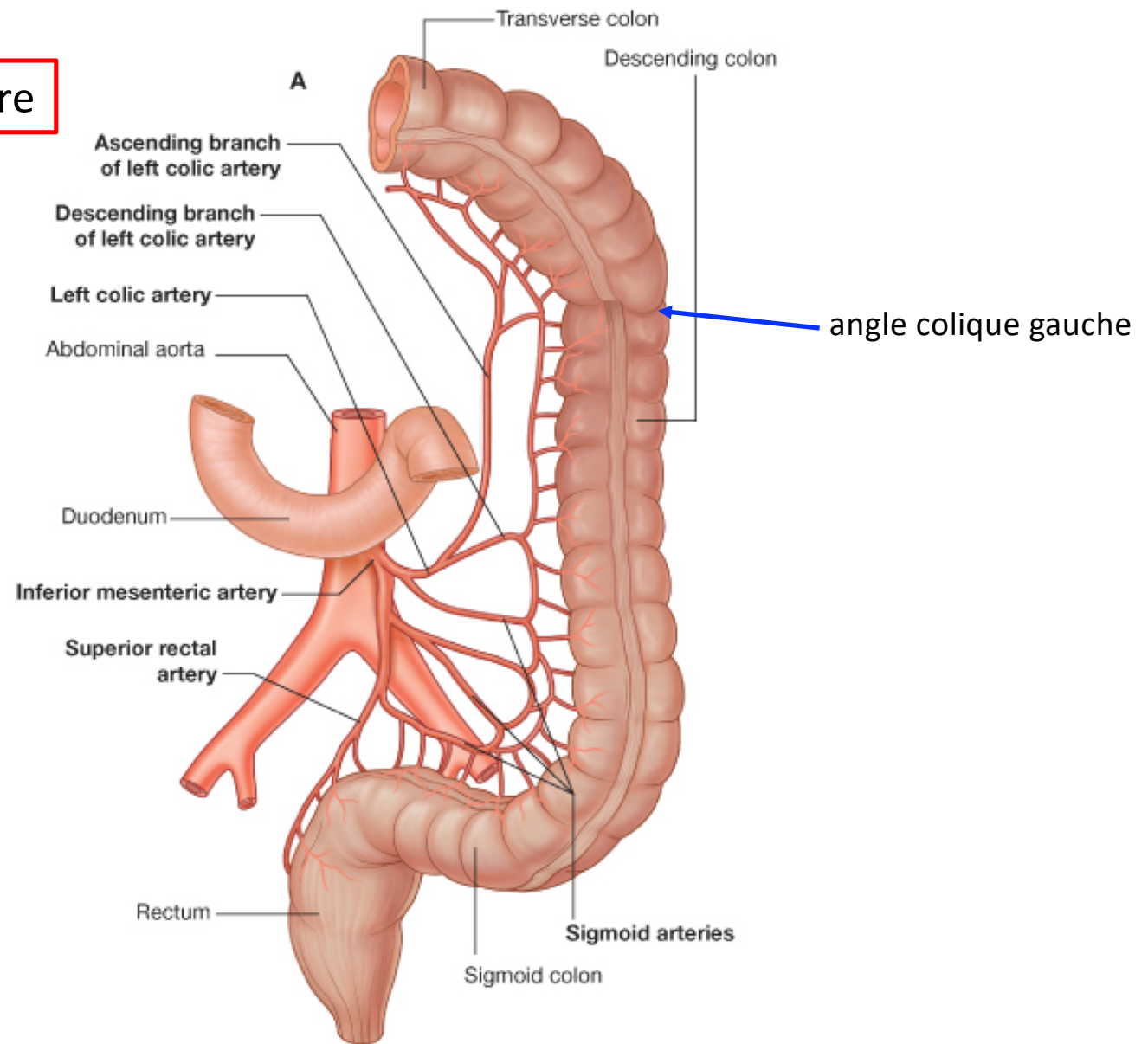
Artère mésentérique inférieure

Territoire :

1/3 du côlon transverse
côlon descendant
côlon sigmoïde
rectum proximal

Branches de l'AMI :

- artère colique gauche
- branches sigmoïdes
- artère rectale supérieure
(branche terminale)



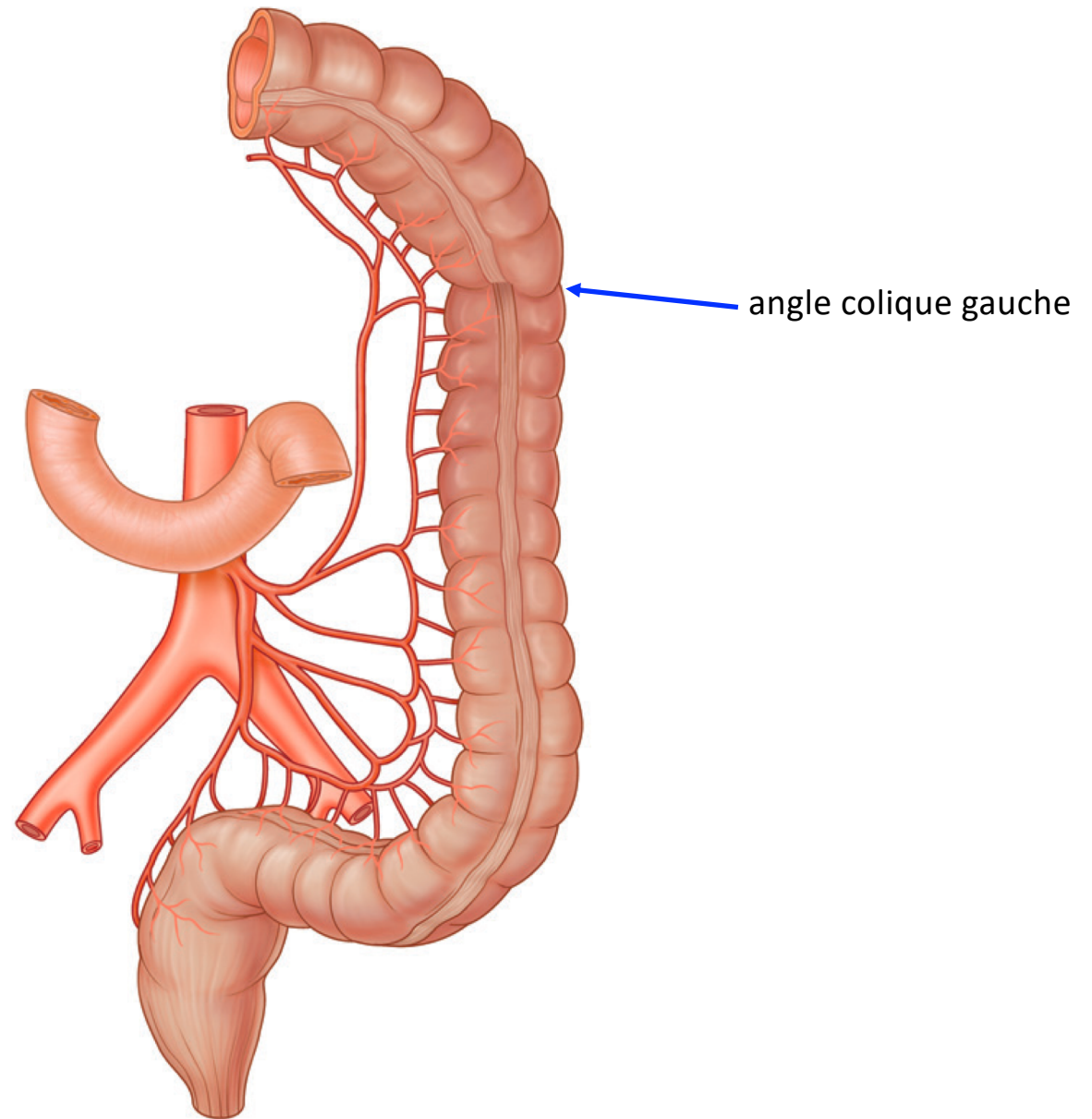
Artère mésentérique inférieure

Territoire :

1/3 du côlon transverse
côlon descendant
côlon sigmoïde
rectum proximal

Branches de l'AMI :

- artère colique gauche
- branches sigmoïdes
- artère rectale supérieure
(branche terminale)

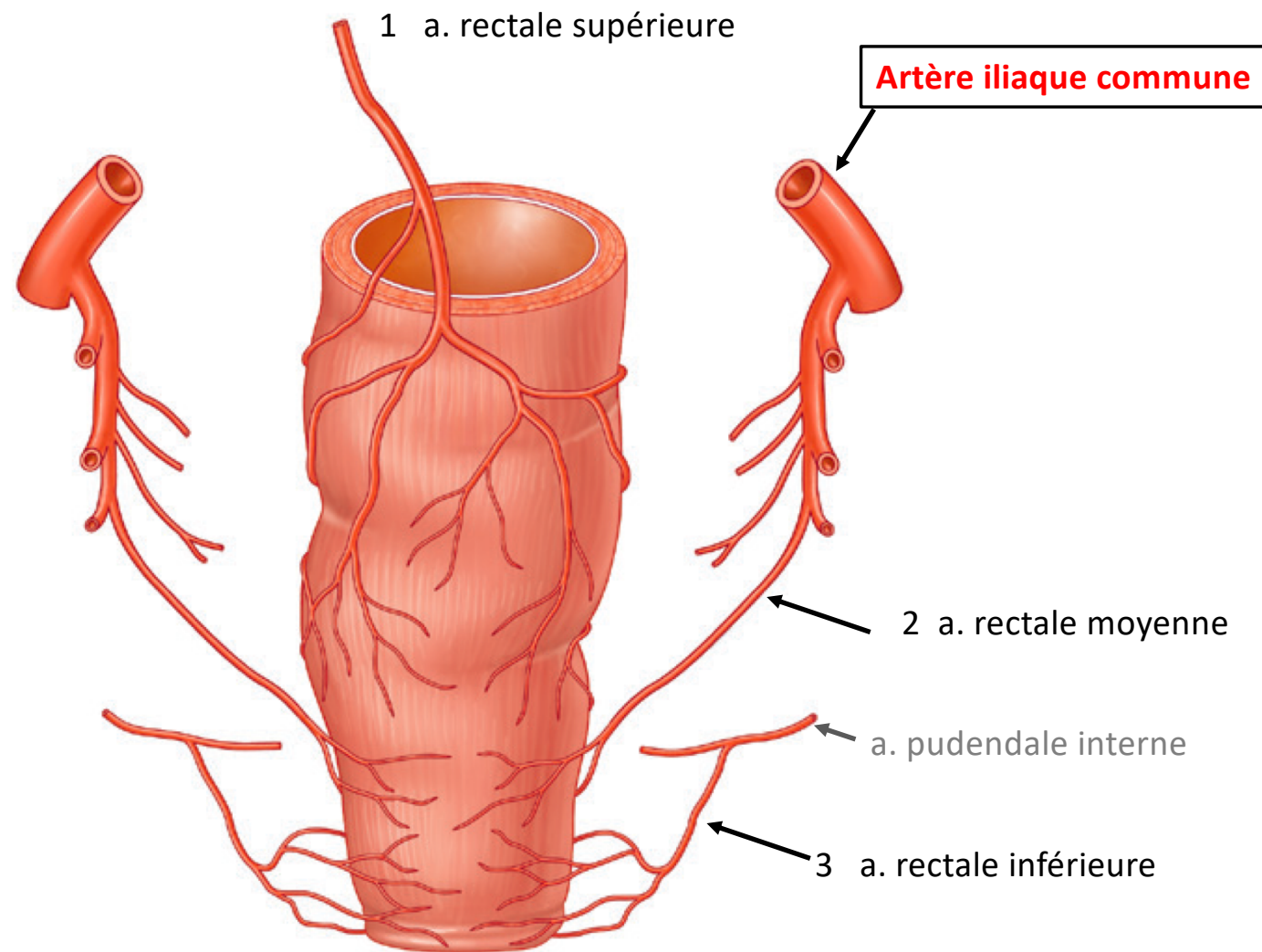


Superior rectal artery

The **terminal branch** of the inferior mesenteric artery is the superior rectal artery (Fig. 4.117). This vessel descends into the pelvic cavity in the sigmoid mesocolon, crossing the left common iliac vessels. Opposite vertebra SIII, the superior rectal artery divides. The two terminal branches descend on each side of the rectum, dividing into smaller branches in the wall of the rectum. These smaller branches continue inferiorly to the level of the internal anal sphincter, anastomosing along the way with branches from the middle rectal arteries (from the internal iliac artery) and the inferior rectal arteries (from the internal pudendal artery).

3 artères rectales :

- 1 supérieure
- 2 moyenne
- 3 inférieure



Vue postérieure

Les 3 artères rectales

1. supérieure
2. moyenne
3. inférieure

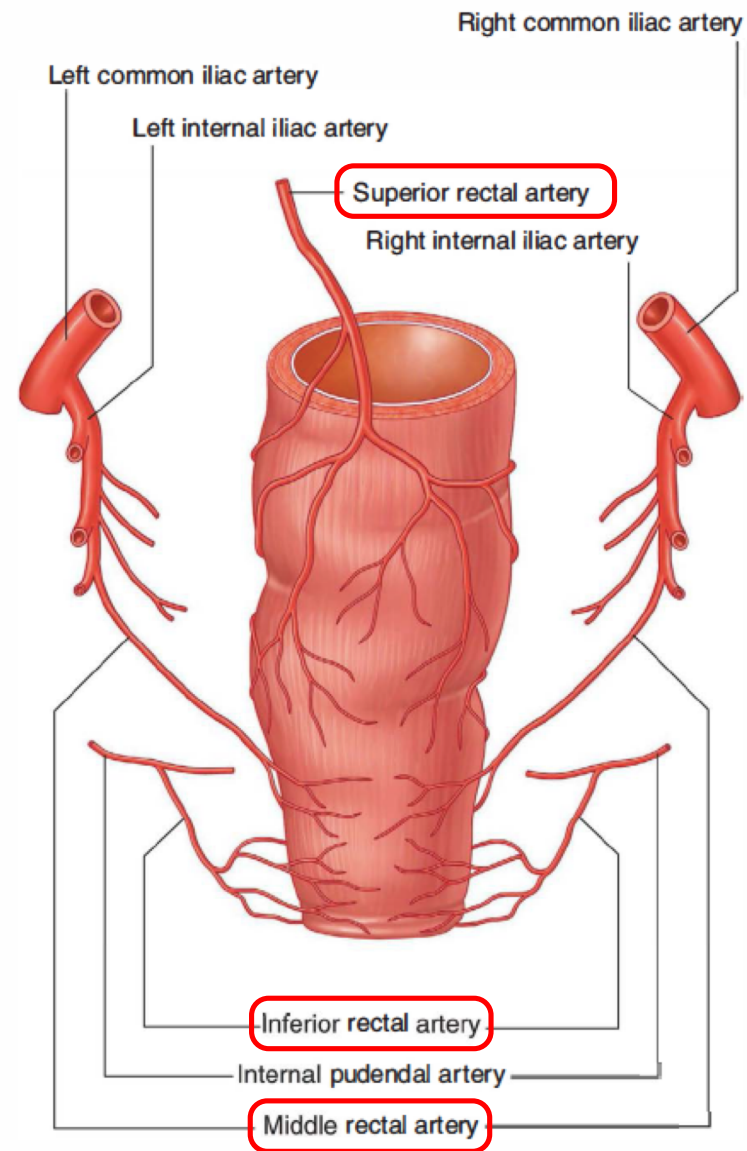


Fig. 4.86 Arterial supply to the rectum and anal canal. Posterior view.